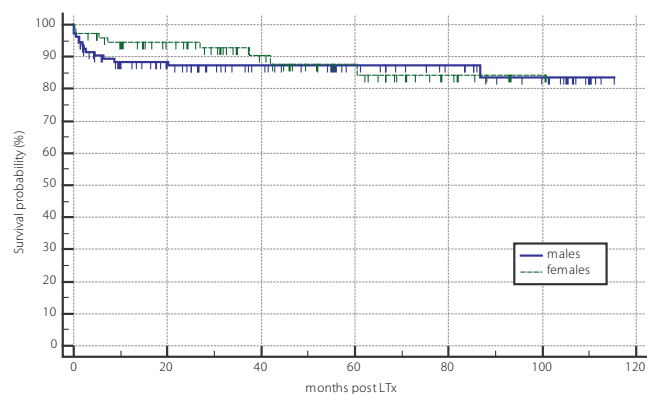
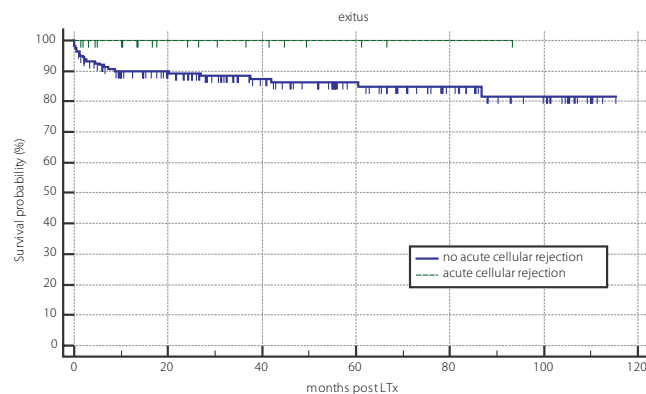


**Tab. 2.** Comparison of selected parameters between groups according to T cell mediated rejection occurring among 184 patients after liver transplantation (LTx) from deceased donor

	no rejection n = 163		T cell mediated rejection n = 21		P
	Median	IQR	Median	IQR	
Age	54.3 [46.3, 59.8]		42.3 [37.6, 57.7]		0.073
Females (%)	41,1		42,9		1.000
Body mass index	26.06 [23.20, 29.00]		26.17 [23.74, 29.86]		0.708
<b>Aetiology of liver disease:</b>					
Alcohol (%)	50.9		23.8		0.035
Viral hepatitis (%)	12.9		4.8		0.470
Non-alcoholic fatty liver (%)	11.0		4.8		0.611
Autoimmune hepatitis (%)	6.7		33.3		< 0.001
Primary biliary cholangitis (%)	8.0		14.3		0.579
Primary sclerosing cholangitis (%)	6.7		19.0		0.13
Wilson's disease (%)	1.8		4.8		0.945
Hepatocellular carcinoma (%)	11.7		0.00		0.204
<b>Cirrhosis severity at liver transplantation</b>					
Child Pugh score	10.00 [8.00, 11.00]		9.00 [7.00, 11.00]		0.226
MELD score	16.00 [13.69, 19.00]		16.00 [13.00, 17.00]		0.466
INR	1.50 [1.36, 1.66]		1.43 [1.24, 1.65]		0.384
Serum creatinine (μmol/l)	75.00 [61.00, 94.00]		67.00 [55.00, 72.00]		0.020
Serum bilirubin (μmol/l)	50.30 [35.65, 96.50]		64.80 [34.60, 137.70]		0.604
Serum albumin (g/l)	30.00 [26.00, 34.00]		28.00 [26.00, 39.00]		0.711
Presence of ascites pre-LTx (%)	79,5		47,6		0.016
Encephalopathy stage (1–4) (%)	61,5		47,6		0.690
<b>Blood groups</b>					
O (0)	23.3				28.6
A (%)	49.1				47.60
AB (%)	11.7				14.3
B (%)	16.00				9.50
Rhesus factor positive (%)	82.8		90.5		0.562
<b>Liver transplantation</b>					
Cold ischemia time (minutes)	377 [300, 494]		400 [311-526]		0.649
Day 5 tacrolimus concentration (ng/ml)	5.90 [4.00, 9.30]		4.80 [2.60, 7.00]		0.097
Discharge tacrolimus concentration (ng/ml)	9.00 [6.80, 11.3]		8.9 [7.50, 10.6]		0.670
Length of hospital stay (days)	24.5 [19.0, 33.0]		35.0 [27.8, 47.5]		0.001
Mean follow-up time (months)	41.10 [18.77, 77.03]		17.52 [10.19, 41.56]		0.013

**Fig. 1.** Overall survival of 193 patients undergoing liver transplantation according to gender. Dotted line: females, full line: males,  $P = 0.80$ 

Number at risk	0	20	40	60	80	100	120
Group: males	107	71	53	38	28	18	0
Group: females	76	57	36	24	10	2	0

**Fig. 2.** Survival probability after liver transplantation according to the occurrence of T cell mediated rejection (TCMR). TCMR – dotted line, no-TCMR – full line,  $P = 0.232$ 

Number at risk	0	20	40	60	80	100	120
Group: no acute cellular rejection	162	118	83	59	37	20	0
Group: acute cellular rejection	21	10	6	3	1	0	0